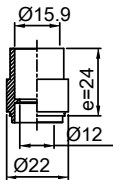
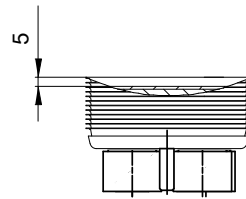
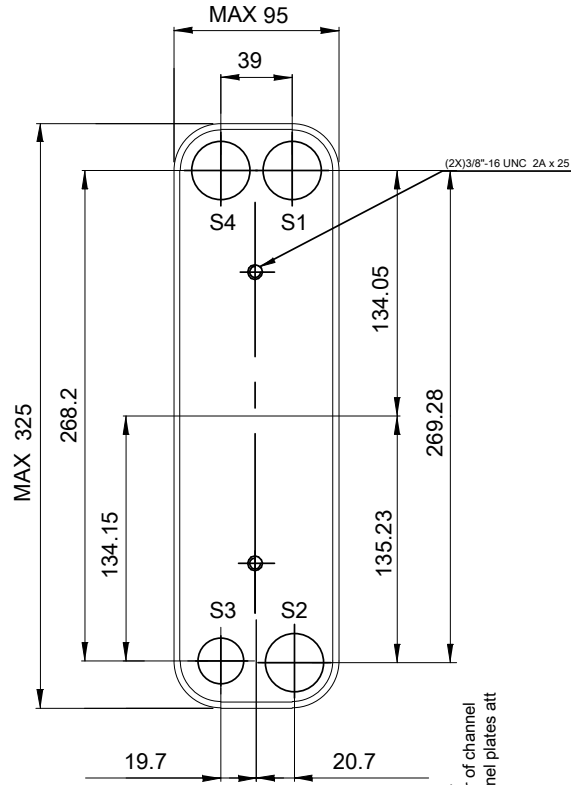
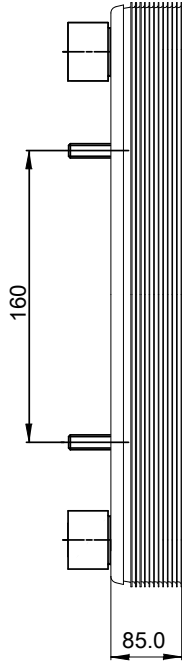
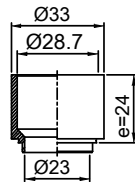


Note that all unique customer requirements (i.e tolerance) need to be verified thru Alfa Laval.

H 68
ALLOY 304
S3



H 41
ALLOY 304
S1,S2,S4



Frameplate is depressed 1.2 mm at connection S4
Pressureplate is depressed 1.2 mm / even number of channel plates at connections T4 / uneven number of channel plates at connections T1.
T1 T2 T3 T4 locations on back side correspond to S1 S2 S3 S4 on front side

HEATING SURFACE null m²
NETWEIGHT 5.4 kg
OPERATING WEIGHT Error kg
PLATE MATERIAL ALLOY 316
PLATE GROUPING 1*24H/1*25H

ALL DIMENSIONS IN MILLIMETERS

SIDE	MEDIA	INLET	TEMP.	OUTLET	TEMP.	FLOW RATE	PRESSURE DROP	LIQUID VOL.
1	Water	S1	1.0 °C	S2	0.0 °C	0 kg/h	null kPa	0.7 dm ³
2	Water	S3	-1.0 °C	S4	0.0 °C	0 kg/h	null kPa	0.7 dm ³



PRESSURE VESSEL APPROVAL UL/CRN
ACH-30EQ-50H-F (3287084897)

www.alfalaval.com

CUSTOMER NAME / REF. NO.

COMPANY / REF.
Que Calor
Pedido Mayo 2018

TOTAL LENGTH 109 mm
TOTAL WIDTH 95 mm
TOTAL HEIGHT 325 mm

5/24/2018
REV 0